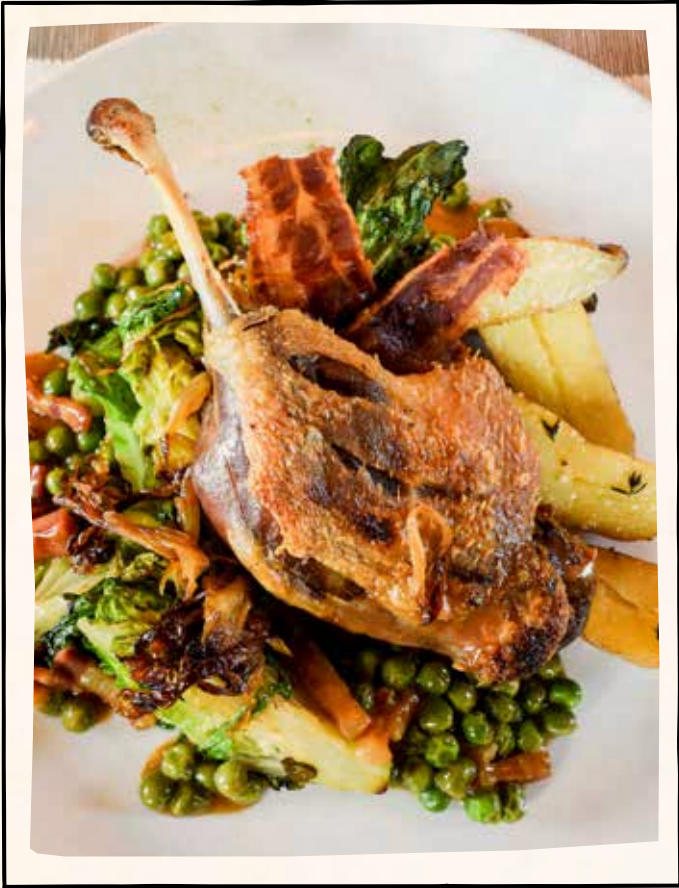


**THE CASTLE INN**

# Christmas Menu





Food



Rooms and Bar

# Festive Menu

2 courses £22.95 – 3 courses £26.95

## Starters

**Pumpkin and Sage Soup**  
(vg) (gf)

**Homemade Olive and Rosemary Focaccia**  
vegan wensleydale, homemade pickle. (vg)

**Duck and Pork Terrine**  
cranberry, sourdough.

**Salmon Gravdax**  
capers, honey, mustard. (gf)

**Wood Smoked Pigeon**  
artichoke puree. (gf)

## Mains

**Mushroom, Chestnut and Spinach Wellington**  
roast potatoes, Bromham winter vegetables,  
sprouts, sorrel jus. (vg)

**Turkey and Apricot Parcel**  
pigs in blankets, roast pots, chestnuts,  
Bromham winter vegetables, sprouts, sorrel jus. (gf)

**Red Pepper Polenta**  
sweetcorn puree, green beans. (vg) (gf)

**Fillet of Sea Bream**  
lemon and saffron potato risotto. (gf)

**Sous-vide Blade of Beef**  
fondant potato, cavolo nero, shallots, jus. (gf)

## Desserts

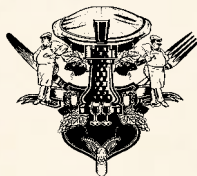
**Christmas Pudding**  
crème anglaise.

**Dark Chocolate and  
Passionfruit Bavarois** (vg)

**Mulled Syrup Pear**  
berry sorbet. (vg) (gf)

**Caramel Pannacotta**  
gingerbread. (gf)

**Chocolate and Banana Fondant**  
vanilla ice cream.



**THE CASTLE INN**

# Terms & Conditions

## Christmas bookings Terms and Conditions

- The Christmas party menu is available for bookings only, minimum of ten guests.
- All bookings are regarded as provisional until The Castle Inn has received full payment of the deposit.
- To confirm your booking, The Castle Inn requires a £10.00 deposit per person for all parties booked onto the Christmas Menu. This deposit will be redeemed against your final bill.
- The deposit must be paid within 14 days of making the booking. Failure to do this will result in the booking being released.

### How to pay your deposit:

Your total deposit must be paid in one transaction

- By cash, in person at The Castle Inn. Please avoid peak times (12pm-3pm & 7pm-9pm)
- By credit or debit card (over the phone or in person).
- By Bank transfer.
- Sorry, we cannot accept cheques, or payments after the date of your booking.
- All bills must be settled on or before the date of your booking.

## Cancellation Policy

- If you need to cancel your booking, you must notify The Castle Inn straightaway.
  - If you cancel your booking and give more than 14 days' notice your deposit will be refunded in full.
  - If you cancel your booking and give less than 14 days' notice your deposit will be retained in full\*
- \*Please note this also applies if you want to reschedule your booking to another date (after the 24th December)*

## Confirming Numbers

- You are advised to keep us informed of any changes in numbers (regardless of how small).
- In the event that the confirmed numbers in your party reduce by 10% or more without at least 24hrs notice, The Castle Inn reserves the right to forfeit all deposits above the 10% reduction.

## By Way of Illustration...

- If your booking is confirmed for 20 but only 18 people turn up then your full deposit would be redeemed.
- However, if your booking is confirmed for 20 but only 15 turn up then you will forfeit the deposit for 3 people.

## Pre-orders

- We do require you to pre-order your meal choices. All pre-orders must be in 7 days before your booking. The Castle Inn reserves the right to retain deposit monies and release the booking if we have not received your pre-order before this time.
- You will only be able to order from the Christmas Party menu – the main menu will not be available for group bookings between 24th November – 24th December.
- We also welcome wine pre-orders to help get the party started. Please see a manager for more information on our wine packages.

## Corkage

Charged at £15 per bottle of wine and £20 per bottle of champagne/sparkling wine.

## Accommodation

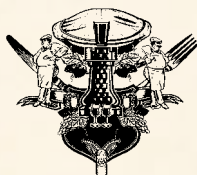
The Castle has four guest rooms, Christmas parties will receive a 10% discount on all our room prices in December 2018, when booking directly with us.

## Damage

The Castle Inn reserves the right to retain deposit monies should there be any damage caused to fixtures or fittings by any member of the party.

## Other Information

- Please aim to arrive at least 10 minutes before your booking time.
- We will only hold tables for up to 15 minutes after booking time; if you have not arrived or called to let us know you're running late, we reserve the right to release your table.
- Please inform us of any special requirements and we will endeavour to meet them for you.
- The Castle Inn accepts no responsibility for the loss or damage to any items left in its care. All items are left entirely at the owner's risk.
- A discretionary 10% service charge will be added to tables of 8 or more (all of which goes to The Castle Inn's staff).
- Please note that all of our menus are subject to a seasonal change. For the most up to date menu, please refer to our website: [www.flatcappers.co.uk](http://www.flatcappers.co.uk)



**THE CASTLE INN**